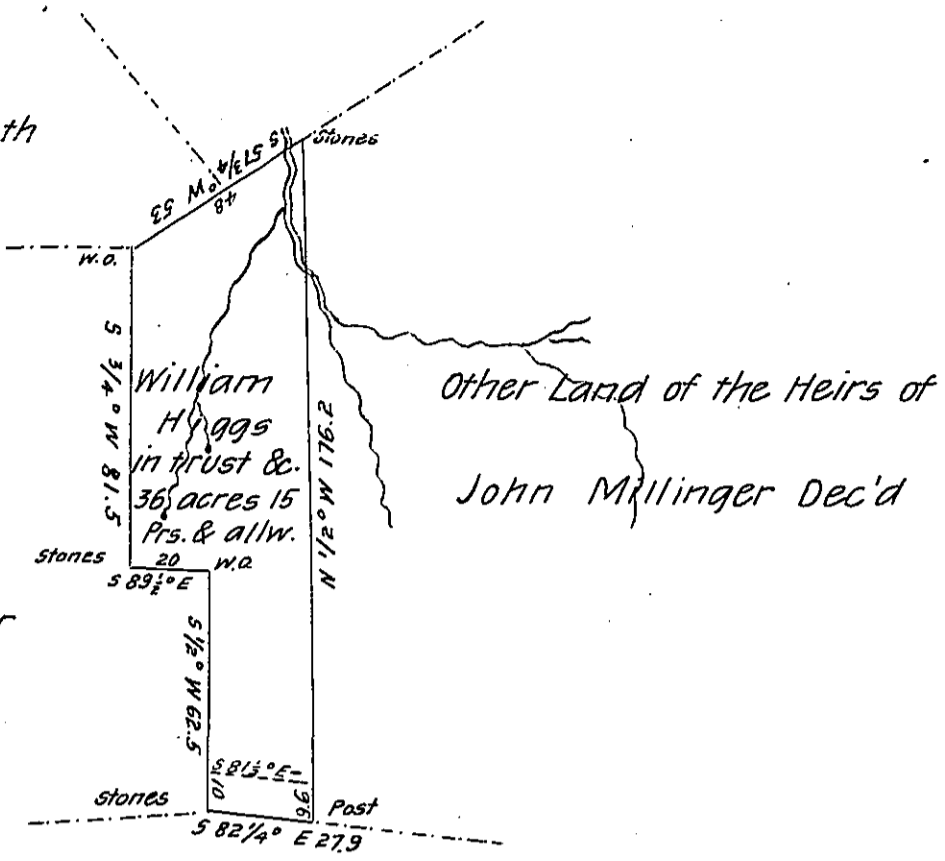


Formerly Mary Hays  
Now Henry Smith

Joseph Smith

Formerly Enoch Rose

Now Jacob Fulmer



Formerly Samuel Higgs  
Now Geo. S. Hicks

Line S 81 1/2° E 279 pds. represents the interference with land surveyed on Warrant to William Higgs

Surveyed the above described tract of Land on the 8<sup>th</sup> day of June 1837 in pursuance of a Warrant granted to William Higgs Administrator in trust for the heirs of John Millinger Dec'd dated the 9<sup>th</sup> December 1829. Situate on a branch of Barren Run in South Huntingdon township, County of Westmoreland Containing Thirty-Six acres fifteen perches & allowance &c.

John Gay D.S.

To John Taylor Esquire

Surveyor General of Penna.

N.B. There is no improvement on the above described Land.

John Gay D.S.

IN TESTIMONY that the above is a copy of the original remaining on file in the Department of Internal Affairs of Pennsylvania, made conformably to an Act of Assembly approved the 16th day of February, 1833, I have hereunto set my Hand and caused the Seal of said Department to be affixed at Harrisburg, this third day of May 1906.

*Loac R. Rowson*  
Secretary of Internal Affairs.